

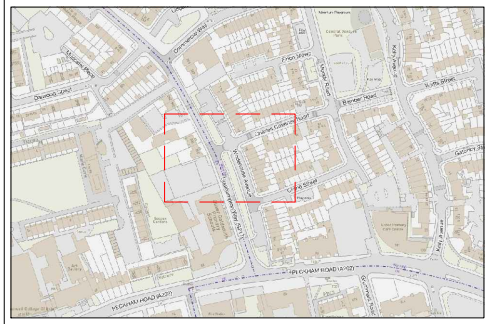
NOTES

1. Dimensions in meters, unless otherwise stated.
2. This drawing should be read in conjunction with other relevant engineering details, drawings & specifications.
3. Any discrepancies should be reported to the design engineer immediately, so that clarification can be sought prior to the commencement of works.
4. The dimensions must be verified on site before construction.
5. All works are to be in accordance with Southwark borough council specification and standards.

KEY

- YORKSTONE PAVING**
Yorkstone flag paving on existing footway, grey blue buff, mixed gauges and lengths, 63mm thick. Area: 94m². For Detail see CD1 on dwg. no.LBS/MW/SOUTHAMPTON_WAY/900-1100-01
- YORKSTONE PAVING**
Yorkstone flag paving on new buildout, grey blue buff, mixed gauges and lengths, 63mm thick. Area: 8m². For Detail see CD1 on dwg. no.LBS/MW/SOUTHAMPTON_WAY/900-1100-01
- RAISED TABLE**
Extension to raised table. Area: X m²
- T(B)-PC(65)**
Blister tactile stone slab, buff/red as shown, 400x400x65. Area: Buff - 6m² / Red - 7m². For Detail see CD2/CD3 on drawing no.LBS/MW/SOUTHAMPTON_WAY/900-1100-01
- 150x300mm GRANITE KERB**
Re-laid granite kerb (from contractors store). Length: 63m. For Detail see CD2 on dwg. no.LBS/MW/SOUTHAMPTON_WAY/900-1100-01
- 50x150mm CONCRETE EDGING**
Precast concrete edging surrounding resin bound buildouts. Length: 24m. For Detail see CD8 on dwg. no.LBS/MW/SOUTHAMPTON_WAY/900-1100-03
- PROPOSED ROAD MARKING**
Proposed/Refreshed road markings
- PROPOSED CARRIAGEWAY GULLY**
New Pot/Chute Gully. For Detail see DD1 on dwg. no.LBS/MW/SOUTHAMPTON_WAY/500-02 (2no.)

LOCATION PLAN:



REV	DATE	REVISION DESCRIPTION / DETAILS	DRN BY	CHKD BY	APPRVD BY
-	16.01.23	INITIAL ISSUE	BR	--	--



PROJECT:
**MINOR WORKS
 SCHOOL STREETS AIR QUALITY
 OLIVER GOLDSMITHS - SOUTHAMPTON WAY**

TITLE:
GENERAL ARRANGEMENT

STATUS:	OD	DRAWN	BR
		DESIGNED	BR
SCALE:	1:250 @ A3	CHECKED	--
		APPROVED	--
DRAWING NO:	LBS/MW/SOUTHAMPTON_WAY/GA-01	REV:	-
DATE DRAWN:	16 FEB 2023	DATE ISSUED:	XXX